

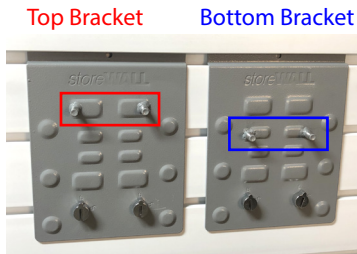
# Slatwall Steadyrack Bracket Instructions

storeWALL is now offering a bracket system making Steadyrack compatible with all storeWALL slatwall systems. Easy to install and can be set up anywhere on our panel systems (instead of only on the wall studs). In addition, it can be easily moved as your organization needs change.

Installation tools needed:

1. Flathead screw driver
2. Wrench or ratchet set

STEP 1 – Find the top bracket...It is the one where the screw prongs are located higher on the face of the bracket.



STEP 2 – Remove the plastic housing pieces on both the top and bottom of the Steadyrack.



STEP 3 – Attach the two brackets to the slatwall.

Check spacing by lining up Steadyrack and make sure each bracket is on the correct slot. (Match up the holes on the top and bottom of the Steadyrack to the screw pieces)



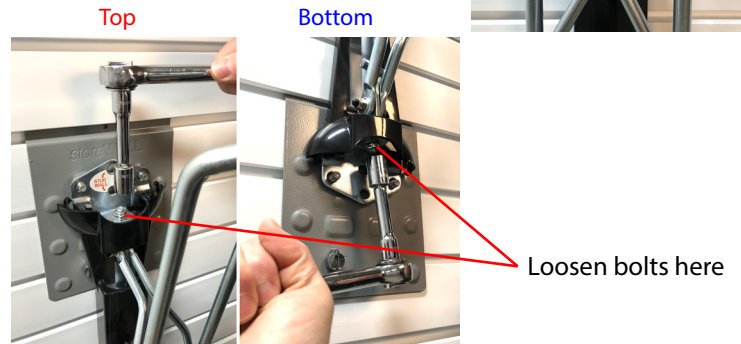
STEP 4 – Lock both CamLoks on the top bracket only, securing the bracket to the panel.

Top Bracket



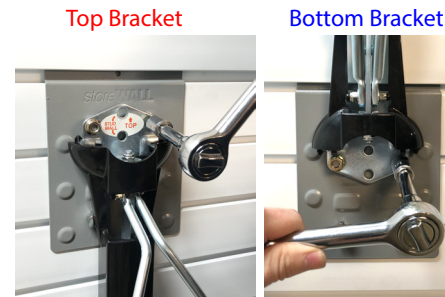
STEP 5 – Insert the Steadyrack so it matches up the screw pieces on both brackets.

PRO TIP – If the Steadyrack holes do not line up to the bracket screws adjust the Steadyrack height by loosening the bolt on top and on the bottom. This will give more flexibility in the system to help align the screws.

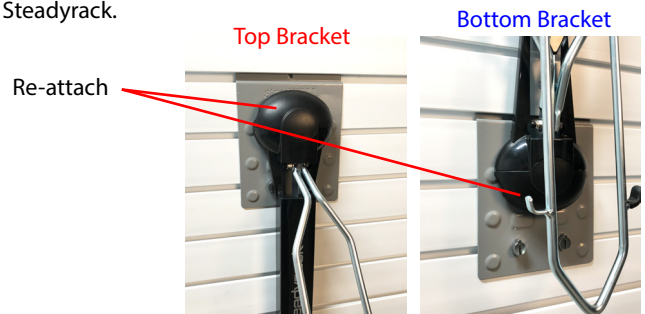


STEP 6 – Lock both CamLoks on the bottom bracket.

STEP 7 – Tighten both bolts on the top bracket and both bolts on the bottom bracket with a wrench or ratchet tool.

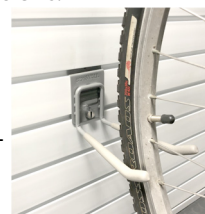


STEP 8 – Re-attach the plastic housing units to both the top and bottom of the Steadyrack.



STEP 9 – Bottom tire holder options: 1) If your bottom tire is butting against the slatwall, then please attach the storeWALL hook that was included to hold the tire. 2) If the rear wheel hangs lower than the slatwall, use the rear wheel bracket included in the original Steadyrack package. IMPORTANT: If not installing on studs (over drywall) please use drywall anchors and screws.

1) storeWALL Hook



2) Steadyrack rear wheel bracket

