

Slatwall Vacuum Installation Instructions

storeWALL is now offering a wall mounted vacuum system. Easy to install and can be setup anywhere on our panel systems (instead of only on the wall studs). In addition, it can be easily moved as your organization needs change.

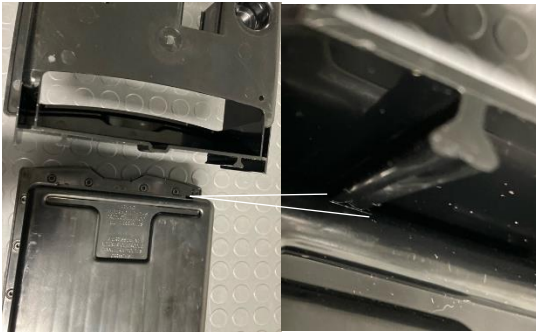
Installation tools needed:

1. Flathead screw driver

*Note for safety information and warranty details please reference the intervac manual:



Step 1: Attach the tool caddy to the vacuum by sliding the dove tails on the bottom of the caddy into the grooves at the top of the vacuum.



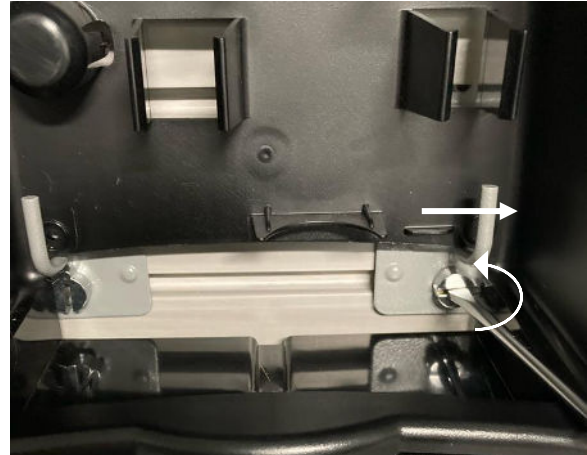
Step 2: Install the two U-Hooks on the slat wall approximately 3.5 inches apart. Lock only one of the two U-Hooks in place.



Step 3: Set the vacuum on the U hooks.



Step 4: Slide the unlocked U-Hook as far over as possible before locking this in place.



Step 5: Optional: Install the hose retainer on the front panel with the two small black screws. There is a small indentation on the retainer where the screws can penetrate. Note that when installed you should be able to read the word "Warning".

Step 6: Plug in the vacuum and start using!